

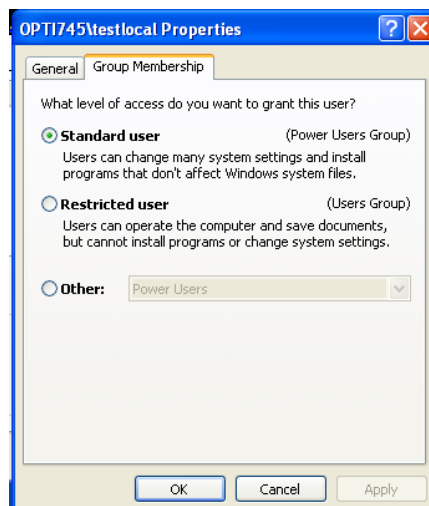
December 3, 2009

To set up an I'mOnIt! user that is not a system administrator on the local system:

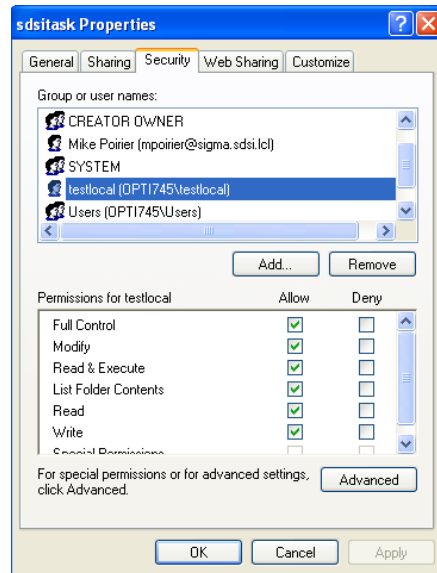
1. Define the user as a standard user:
  - Control Panel
  - User accounts
  - Select the desired user and click "Properties" button:



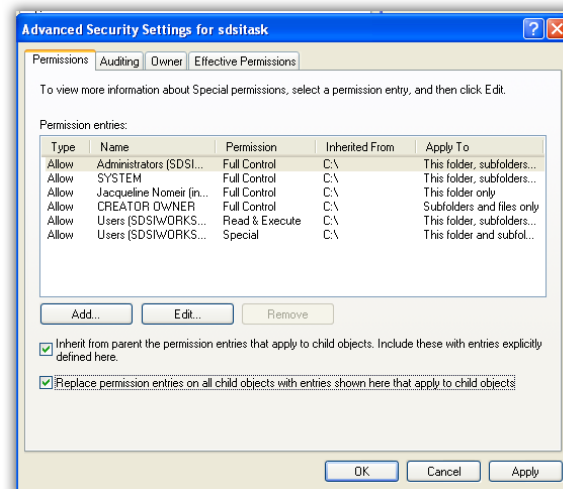
2. On the properties dialogue click select the Group Membership tab
  - a. select "Standard User"
  - b. click the OK button.



3. Set the folder security
  - a. Browse to the folder c:\sdsitask.
  - b. Right click on the folder and select “Properties” from the drop down menu.
  - c. Add the user as an explicitly authorized user for the folder,
  - d. Click the check box to the left of the ‘Full Control’ option. The screen will look like:



4. Click Advanced
  - a. Check the checkbox “Replace permission entries on all child objects with entries shown here that apply to child objects”



5. Click OK Twice to close all dialog boxes

The same procedure works for domain based / active directory controlled user accounts.